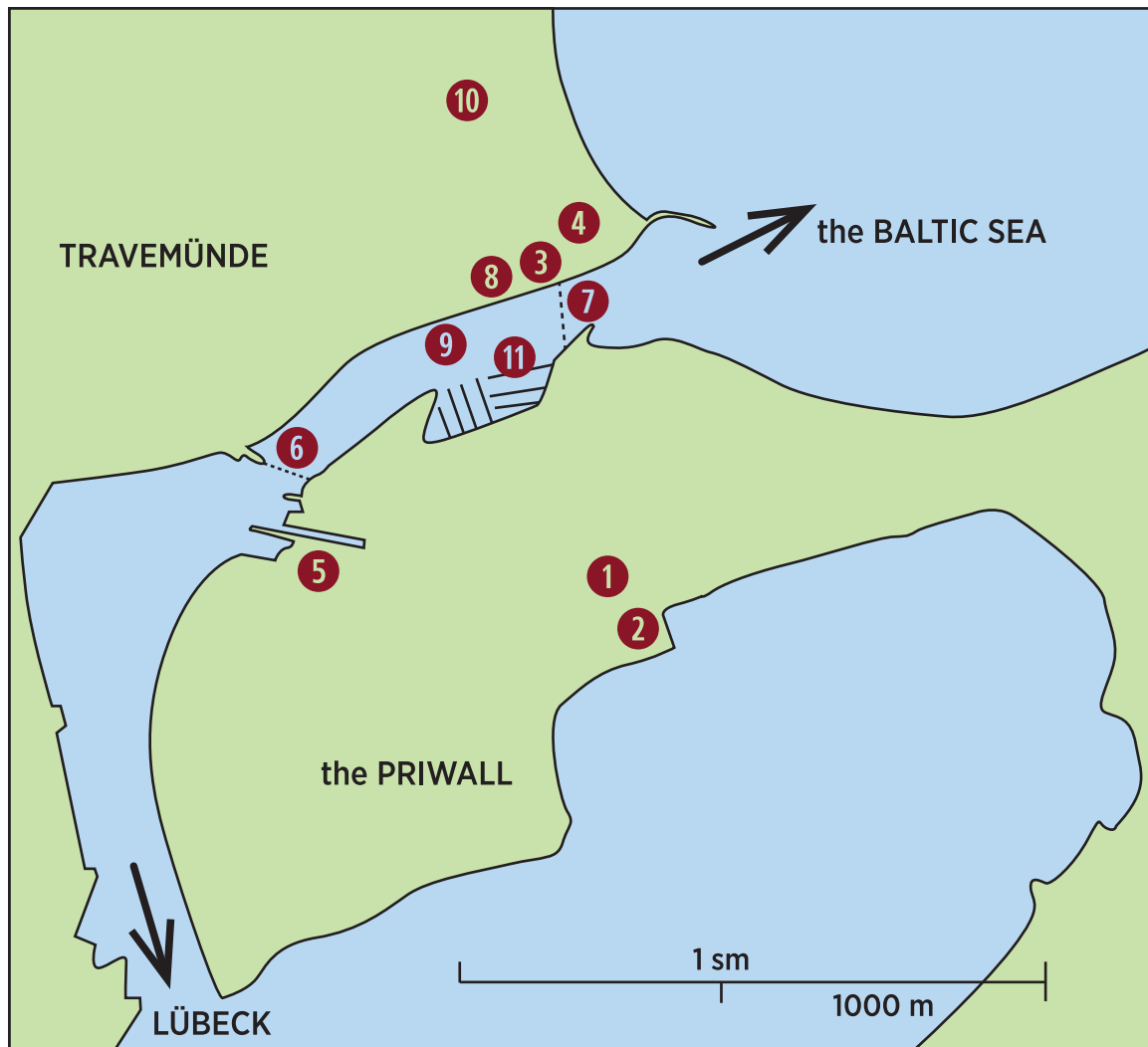




# GMI 2019 EUROPEAN ANNUAL CONFERENCE Travemünde - GERMANY October, 20<sup>th</sup> - 23<sup>rd</sup> 2019



**1** The Vocational School. We have the **Conference Hall** here, as well as the **rooms** “Vocational School”. We will have **lunch** here together on Monday and Tuesday.

**2** Seamen’s School. The **Field Training** will take place here. (LiPo fire, inspecting and riding Sea-Help and MCS service/ rescue boats, rescue boat free fall)

**3** The “Bootsschuppen” LYC. The **In Depth Training** will take place here, as well as **Networking** after lunch on Monday evening.

Here we will be welcomed by the Lübeck Yacht Club. Martin Åberg and Peter Clark will give a nostalgic summary.

**4** Hotel A-ja. **Conference Registration and Networking** on Sunday.

**5** **Appartments** Rosenhof.

**6** **The Main Ferry.** Pedestrians, bikes cars etc. Check operation hours!

**7** The “seasonal” ferry. (Sea-Help and MCS will kindly provide a quick transfer on Monday and Tuesday morning on 08:15 sharp in this location. Maybe return transfer later and if required.)

**8** The Marina Café. **Luncheon on Sunday** for participants of the In-Depth Training. Dinner on Monday.

**9** Ship Café Traveblick. **Networking** on Saturday.

**10** Train station “Travemünde Strand”.

**11** The “Passathafen” and the four masted bark s/v Passat

**GLOBAL MARINE INVESTIGATORS**

info@gmi-eu.org [www.gmi-eu.org](http://www.gmi-eu.org)

**Seat:** Steenvliet 6, 4191TZ Geldermalsen,  
The Netherlands